

Test Report



Report No. A2210316546101002

Company Name shown on Report JIANGSU YUXING FILM TECHNOLOGY CO.,LTD

Address NO.8-8 TONGZIHE WEST ROAD,ZHONGLOU ECONOMIC DEVELOPMENT ZONE,CHANGZHOU,JIANGSU P.R.CHINA

The following sample(s) and sample information was/were submitted and identified by/on the behalf of the applicant

Sample Name Polyester Film
Part No. CY25R
Color Milk white semi transparent
Material Polyester Resin
Sample Received Date Aug. 6, 2021
Testing Period Aug. 6, 2021 to Aug. 13, 2021

Test Requested As specified by client, to test Lead (Pb), Cadmium (Cd), Mercury (Hg), Hexavalent Chromium (Cr(VI)), Polybrominated Biphenyls (PBBs), Polybrominated Diphenyl Ethers (PBDEs), Antimony(Sb), Phthalates, Polycyclic Aromatic Hydrocarbons (PAHs) in the submitted sample(s).

Test Method Please refer to the following page(s).

Test Result(s) Please refer to the following page(s).



Tested by

Ge Xiaotian

Approved by

Chen Kaimin

Chen kaimin

Lab Manager

Reviewed by

Wendy Geng

Date

Aug. 13, 2021

No. R295821027

Test Report

Report No. A2210316546101002

Page 2 of 9

Test Method

Test Item(s)	Test Method	Measured Equipment(s)
Lead (Pb)	IEC 62321-5:2013	ICP-OES
Cadmium (Cd)	IEC 62321-5:2013	ICP-OES
Mercury (Hg)	IEC 62321-4:2013+AMD1:2017 CSV	ICP-OES
Hexavalent Chromium (Cr(VI))	IEC 62321-7-2:2017 and/or determination of Total Chromium by IEC 62321-5:2013	UV-Vis/ICP-OES
Polybrominated Biphenyls (PBBs)	IEC 62321-6:2015	GC-MS
Polybrominated Diphenyl Ethers (PBDEs)	IEC 62321-6:2015	GC-MS
Phthalates (DBP, BBP, DEHP, DIBP)	IEC 62321-8:2017	GC-MS
Antimony(Sb)	Refer to US EPA 3052:1996 & US EPA 6010D:2018	ICP-OES
Phthalates(DIBP,DIDP,DINP,DNOP,DMEP,DNHP)	Refer to EN 14372:2004(E)	GC-MS
Polycyclic Aromatic Hydrocarbons (PAHs)	AfPS GS 2019:01 PAK	GC-MS

Test Report

Report No. A2210316546101002

Page 3 of 9

Test Result(s)

Tested Item(s)	Result	MDL
Lead(Pb)	N.D.	2 mg/kg
Cadmium(Cd)	N.D.	2 mg/kg
Mercury(Hg)	N.D.	2 mg/kg
Hexavalent Chromium(Cr(VI))	N.D.	8 mg/kg
Tested Item(s)	Result	MDL
Polybrominated Biphenyls (PBBs)		
Monobromobiphenyl	N.D.	5 mg/kg
Dibromobiphenyl	N.D.	5 mg/kg
Tribromobiphenyl	N.D.	5 mg/kg
Tetrabromobiphenyl	N.D.	5 mg/kg
Pentabromobiphenyl	N.D.	5 mg/kg
Hexabromobiphenyl	N.D.	5 mg/kg
Heptabromobiphenyl	N.D.	5 mg/kg
Octabromobiphenyl	N.D.	5 mg/kg
Nonabromobiphenyl	N.D.	5 mg/kg
Decabromobiphenyl	N.D.	5 mg/kg
Tested Item(s)	Result	MDL
Polybrominated Diphenyl Ethers (PBDEs)		
Monobromodiphenyl ether	N.D.	5 mg/kg
Dibromodiphenyl ether	N.D.	5 mg/kg
Tribromodiphenyl ether	N.D.	5 mg/kg
Tetrabromodiphenyl ether	N.D.	5 mg/kg
Pentabromodiphenyl ether	N.D.	5 mg/kg
Hexabromodiphenyl ether	N.D.	5 mg/kg
Heptabromodiphenyl ether	N.D.	5 mg/kg
Octabromodiphenyl ether	N.D.	5 mg/kg
Nonabromodiphenyl ether	N.D.	5 mg/kg
Decabromodiphenyl ether	N.D.	5 mg/kg

Test Report

Report No. A2210316546101002

Page 4 of 9

Test Result(s)

Tested Item(s)	Result	MDL
Phthalates (DBP, BBP, DEHP, DIBP)		
Dibutyl phthalate(DBP) CAS#:84-74-2	N.D.	50 mg/kg
Butyl benzyl phthalate(BBP) CAS#:85-68-7	N.D.	50 mg/kg
Di-(2-ethylhexyl) phthalate(DEHP) CAS#:117-81-7	N.D.	50 mg/kg
Diisobutyl phthalate(DIBP) CAS#:84-69-5	N.D.	50 mg/kg
Tested Item(s)		
	Result	MDL
Antimony(Sb)	163 mg/kg	10 mg/kg
Tested Item(s)		
	Result	MDL
Phthalates		
Di-n-octyl phthalate(DNOP) CAS#:117-84-0	N.D.	50 mg/kg
Di-isononyl phthalate(DINP) CAS#:28553-12-0,68515-48-0	N.D.	50 mg/kg
Di-iso-decyl phthalate(DIDP) CAS#:26761-40-0,68515-49-1	N.D.	50 mg/kg
Diisobutyl phthalate(DIBP) CAS#:84-69-5	N.D.	50 mg/kg
Di-n-hexyl phthalate(DNHP) CAS#:84-75-3	N.D.	50 mg/kg
Bis(2-methoxyethyl) phthalate(DMEP) CAS#:117-82-8	N.D.	50 mg/kg

Test Report

Report No. A2210316546101002

Page 5 of 9

Test Result(s)

Tested Item(s)	Result	MDL
Polycyclic Aromatic Hydrocarbons (PAHs)		
Naphthalene	N.D.	0.2 mg/kg
Phenanthrene	N.D.	0.2 mg/kg
Anthracene	N.D.	0.2 mg/kg
Fluoranthene	N.D.	0.2 mg/kg
Pyrene	N.D.	0.2 mg/kg
Chrysene	N.D.	0.2 mg/kg
Benzo(a)anthracene	N.D.	0.2 mg/kg
Benzo(b)fluoranthene	N.D.	0.2 mg/kg
Benzo(k)fluoranthene	N.D.	0.2 mg/kg
Benzo(j)fluoranthene	N.D.	0.2 mg/kg
Benzo(a)pyrene	N.D.	0.2 mg/kg
Benzo(e)pyrene	N.D.	0.2 mg/kg
Dibenzo(a,h)anthracene	N.D.	0.2 mg/kg
Benzo(g,h,i)perylene	N.D.	0.2 mg/kg
Indenol(1,2,3-cd)pyrene	N.D.	0.2 mg/kg

Sample/Part Description Milk white translucent plastic film

Remark: The sample(s) had been dissolved totally tested for Lead, Cadmium, Mercury, Antimony.

- MDL = Method Detection Limit
- N.D. = Not Detected (<MDL)
- mg/kg = ppm = parts per million

Test Report

Report No. A2210316546101002

Page 6 of 9

Maximum PAHs limits (mg/kg) for the materials with relevant contact/grip and operating surfaces that are to be categorised based on the results of the risk assessment

Parameters	Category 1	Category 2		Category 3	
	Materials intended to be placed in the mouth or materials in toys according to Directive 2009/48/EC or materials for the use by children up to 3 years of age coming into long-term contact with skin (more than 30s) during the intended use	Materials not covered by category 1, coming into long-term contact (more than 30s) or short-term repetitive contact** with skin during the intended or foreseeable use		Materials not covered by category 1 nor by category 2, coming into short-term contact (up to 30s) with skin during the intended or foreseeable use	
		Use by children (< 14 years) (include both active and passive direct contact)	Other consumer products	Use by children (< 14 years) (include both active and passive direct contact)	Other consumer products
Benzo(a)pyrene	< 0.2	< 0.2	< 0.5	< 0.5	< 1
Benzo(e)pyrene	< 0.2	< 0.2	< 0.5	< 0.5	< 1
Benzo(a)anthracene	< 0.2	< 0.2	< 0.5	< 0.5	< 1
Benzo(b)fluoranthene	< 0.2	< 0.2	< 0.5	< 0.5	< 1
Benzo(j)fluoranthene	< 0.2	< 0.2	< 0.5	< 0.5	< 1
Benzo(k)fluoranthene	< 0.2	< 0.2	< 0.5	< 0.5	< 1
Chrysene	< 0.2	< 0.2	< 0.5	< 0.5	< 1
Dibenzo(a,h)anthracene	< 0.2	< 0.2	< 0.5	< 0.5	< 1
Benzo(g,h,i)perylene	< 0.2	< 0.2	< 0.5	< 0.5	< 1
Indenol(1,2,3-cd)pyrene	< 0.2	< 0.2	< 0.5	< 0.5	< 1
Phenanthrene, Anthracene, Fluoranthene, Pyrene	< 1 Sum	< 5 Sum	< 10 Sum	< 20 Sum	< 50 Sum
Naphthalene	< 1	< 2		< 10	
Sum 15 PAHs	< 1	< 5	< 10	< 20	< 50

** Definition "short-term repetitive contact" taken from REACH Annex XVII entry 50 amendment (REGULATION (EU) No.1272/2013)

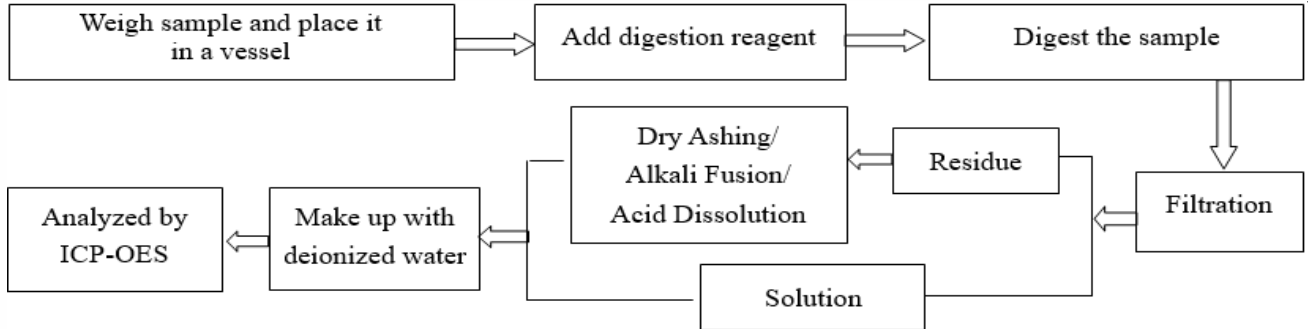
Test Report

Report No. A2210316546101002

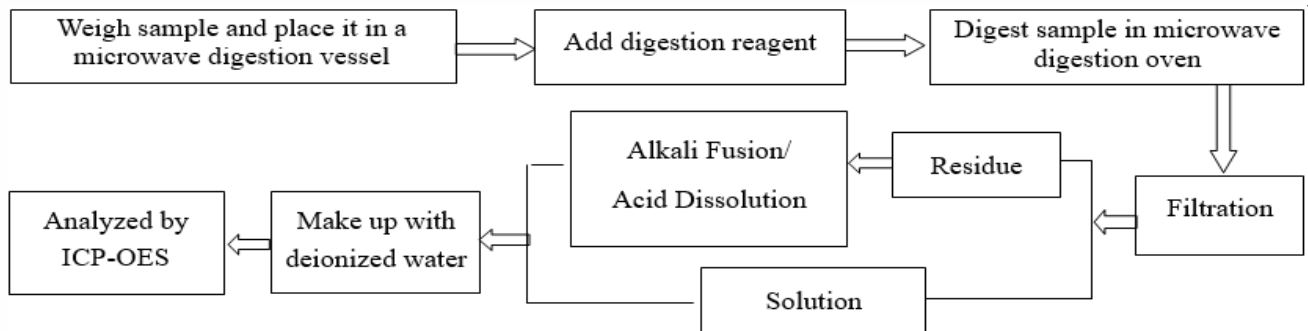
Page 7 of 9

Test Process

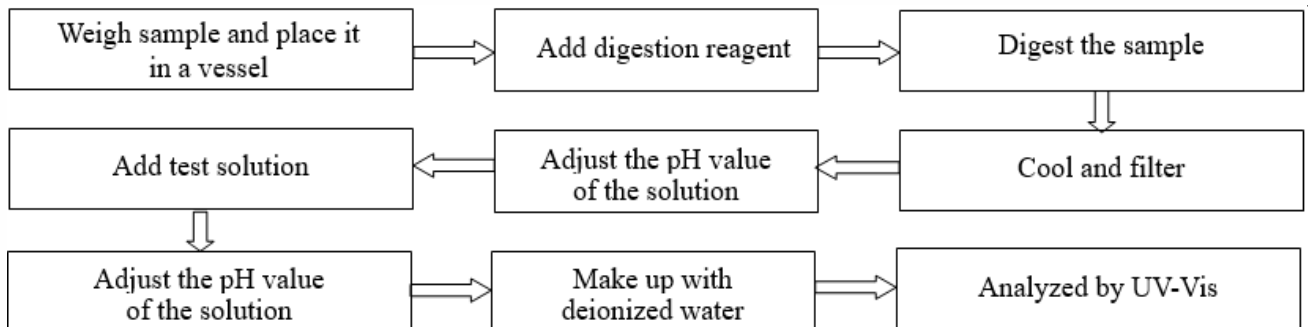
1. Lead (Pb), Cadmium (Cd), Chromium (Cr)



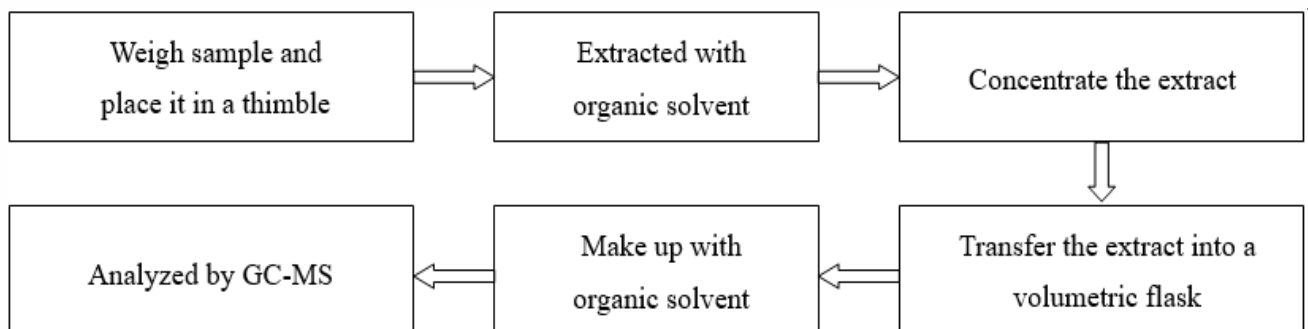
2. Mercury (Hg)



3. Hexavalent Chromium (Cr(VI))



4. Polybrominated Biphenyls (PBBs), Polybrominated Diphenyl Ethers (PBDEs)

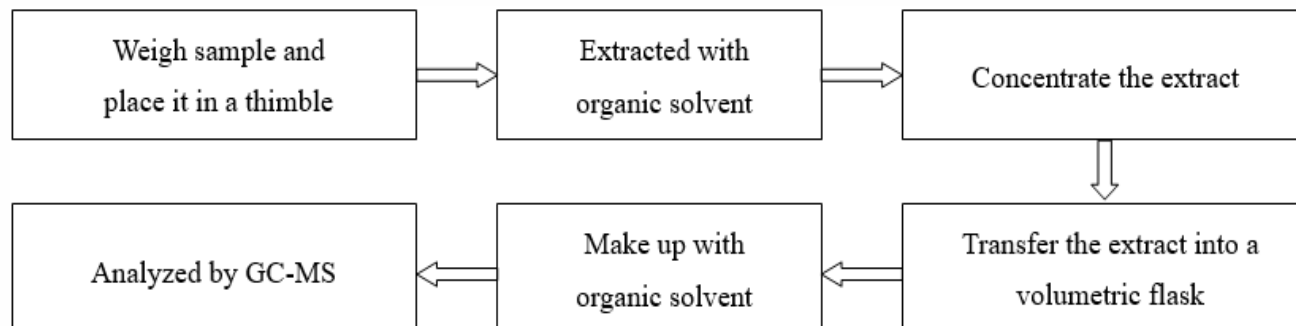


Test Report

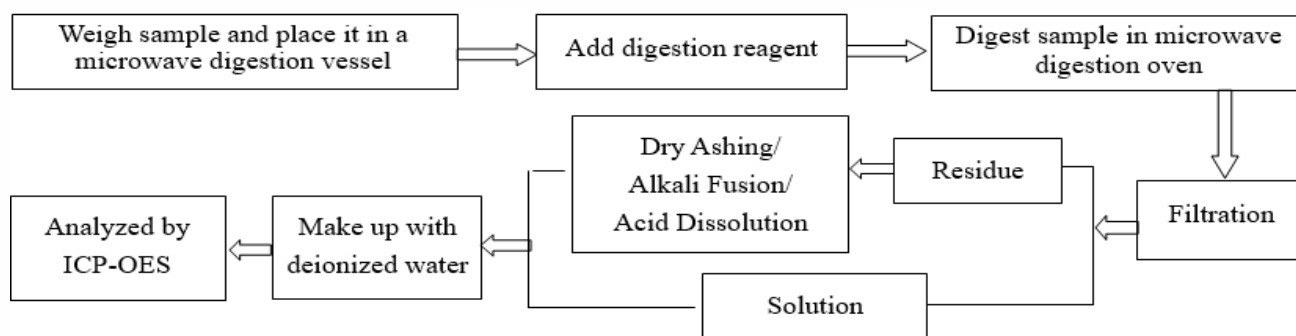
Report No. A2210316546101002

Page 8 of 9

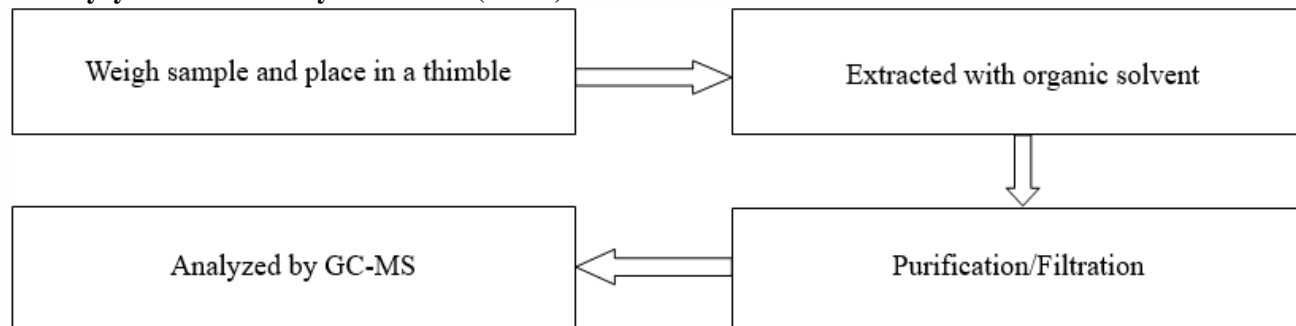
5. Phthalates



6. Antimony(Sb)



7. Polycyclic Aromatic Hydrocarbons (PAHs)

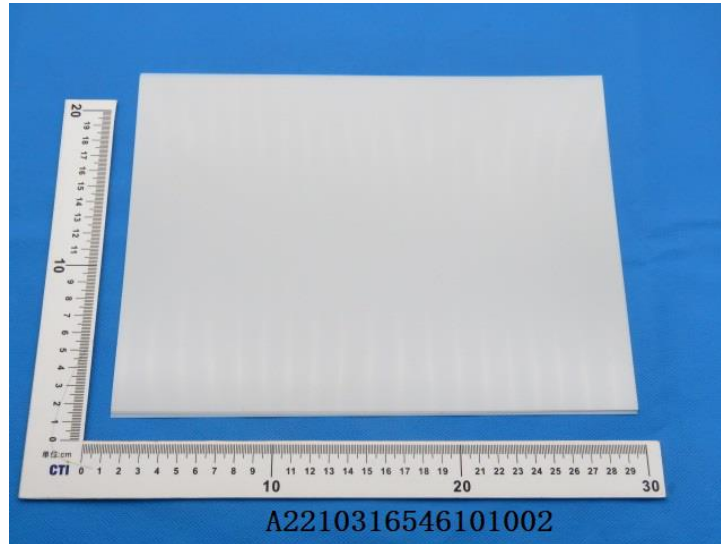


Test Report

Report No. A2210316546101002

Page 9 of 9

Photo(s) of the sample(s)



Statement:

1. This report is considered invalid without approved signature, special seal and the seal on the perforation;
2. The Company Name shown on Report and Address, the sample(s) and sample information was/were provided by the applicant who should be responsible for the authenticity which CTI hasn't verified;
3. The result(s) shown in this report refer(s) only to the sample(s) tested;
4. Without written approval of CTI, this report can't be reproduced except in full;
5. In case of any discrepancy between the English version and Chinese version of the testing reports (if generated), the Chinese version shall prevail.

*** End of report ***

Appendix

Client Reference Information

CY25R11S\CY25RG40\CY25RG48\CY25RG52\CY25RG60\CY25RG72

Statement:

The Appendix Information was/were provided by the applicant who should be responsible for the authenticity which CTI hasn't verified.